



The constant fill fluid coupling



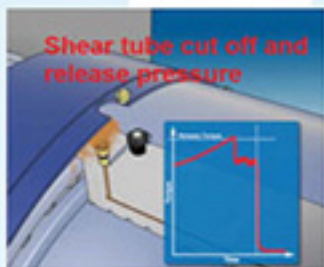
High-performance Universal Joint Shafts / Cardan Shafts



"VOITH" Hydraulic pump



"VOITH" Sefet Set Torque limiting couplings, Torque Limiter



Shear tube cut off and release pressure



Locking Assembly



Metal below coupling

Disc Couplings



Martin Air Cannon



Air Cannon



Retrofit Valve



"Martin" Belt Cleaner



Primary - Cleaner

Secondary Cleaner



TRU-TRAC Self tracking roller the specializes in conveyor belt tracking technology



BEFORE



AFTER

For tracking the belt conveyor miss alignment to run in the center



ROLLENT



High Quality Roller Conveyor



Geared motors



Pressure and Vacuum Switches, Pressure Transmitters



ELI-FLEX polyurethane resin quick and easy repairs for damaged conveyor belting and tier.



SUPER-SCREW® a flexible rubber for quick splicing of rubber belt in any where and any conditions



บริษัท ซี เอ็ม 108 จำกัด  
68/4-5 หมู่ 4 ต.บ้านใหม่ อ.เมืองสุพรรณบุรี จ.สุพรรณบุรี 12000  
C N S UNIVERSAL COMPANY LIMITED  
68/4-5 Moo 4 Tiwanont Rd., Banmai, Muang Dist., Patumthanee 12000

TEL : +662 019 5581-4  
FAX : +662 019 5587  
e-mail : wichai@cns-universal.co.th  
www.cns-universal.co.th





Motor-Geared Motor-Inverter-Servo motor-Suppliers

จำหน่าย มอเตอร์-เกียร์มอเตอร์-อินเวอร์เตอร์-เซอร์โวมอเตอร์

brand

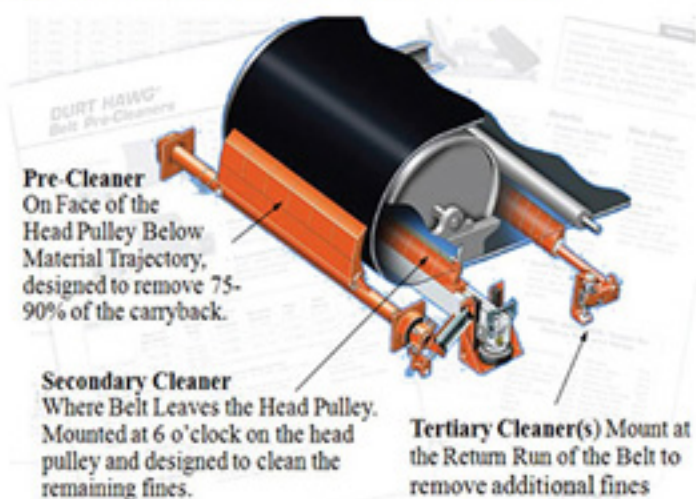


CNS UNIVERSAL CO., LTD.  
บริษัท ซีเนิสยูนิเวอร์ซัล จำกัด

Tel. : +662 963 9122  
E-mail : [wichai@cns-universal.co.th](mailto:wichai@cns-universal.co.th)  
Url : [www.cns-universal.com](http://www.cns-universal.com)

## Belt Cleaner

Martin® conveyor belt cleaners and belt scrapers set bulk material handling industry standards for conveyor belt cleaning. To provide effective cleaning, Martin is the pioneer of the multiple cleaner system



### Blade Guide Selection

- Abrasive Conditions : Orange
- Exposure to Chemicals : Brown
- Exposure to High Temperature : Green
- Dry Sand and Gravel : Clear
- Pulp and Paper/Tacky Material : Navy Blue

**Primary Cleaner** - Installed on the face of the head pulley below the discharge trajectory, this cleaner uses low pressure to remove approximately 75 to 90 percent of the residual material.



QC1™ Cleaner HD

QC1™ Cleaner XHD

QC1™ Cleaner

SHD 600 Series Cleaner

**Secondary Cleaner(s)** - Installed at the point where the belt leaves the head (discharge) pulley, or further along the return where space permits, these systems remove the remaining material. Additional (tertiary) cleaners are installed as required by conditions



SC#16

SCQC#2

DT2 Inline Cleaner

DURT Hawg@DH2 cleaner

## Transfer point

Martin offers bulk materials transfer point products to support and align conveyor belts. Martin also offers conveyor skirting, wear liner, stringer systems, modular chute walls and tail pulley plows.



Impact Bar



Apron Seal



## Air Cannon

Martin® Air Cannons / Air Blasters improve flow from silos, bins, bunkers and storage vessels, by knocking down rat holes, blockages and buildups, to boost plant efficiency



Tornado Air Cannon



Hurricane Air Cannon



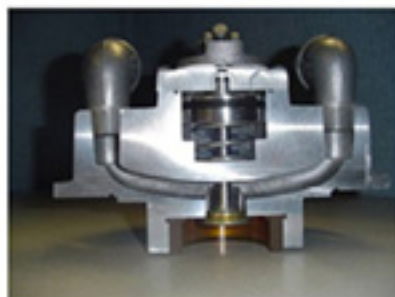
Typhoon Air Cannon



Multi Valve Air Cannon



Tonado Valve



Hurricane Valve



Typhoon Valve



Sonic Horn



Accessories



Service Gate



Nozzle

### MARTIN VIBRATORS



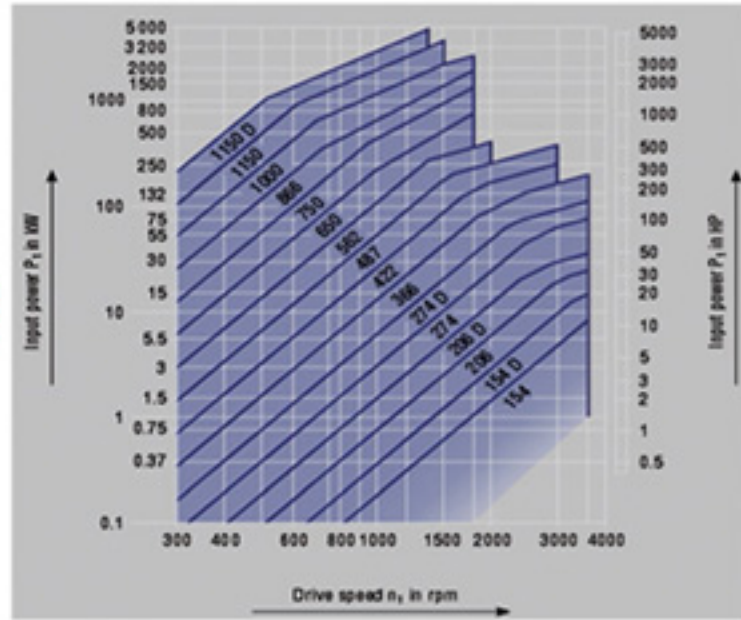
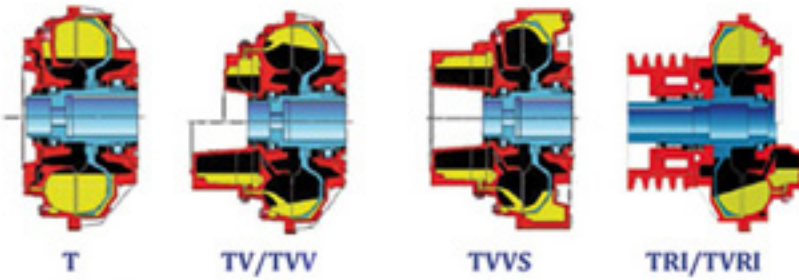
Vibration motor

## Voith Couplings with Constant Filling



The Voith Turbo Coupling is a hydrodynamic coupling based on Foettinger's Principle. Its main components are two bladed wheels a pump wheel and a turbine wheel - as well as an outer shell. Both wheels are positioned relative to each other. Power transmission is achieved with minimal mechanical wear and there is no mechanical contact between the power transmitting components.

### Design



### Applications



Conveyor



Crusher



Bucket elevator

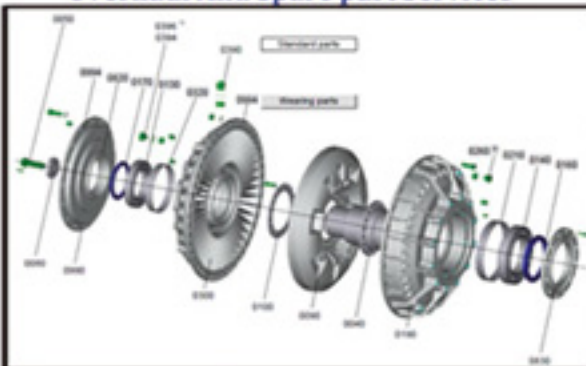


Bucket wheel excavator



Mills

### Overhaul And Spare part Services

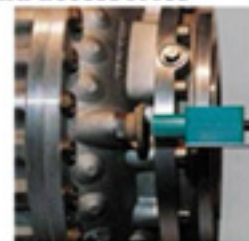


Coupling main parts

### Monitor devices and accessories



MTS



BTS



FUSIBLE PLUG



Original Oil Seal

Local Oil Seal



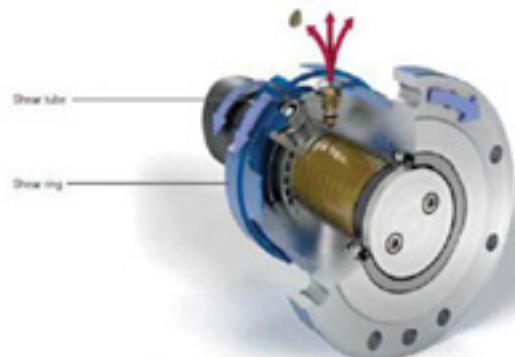
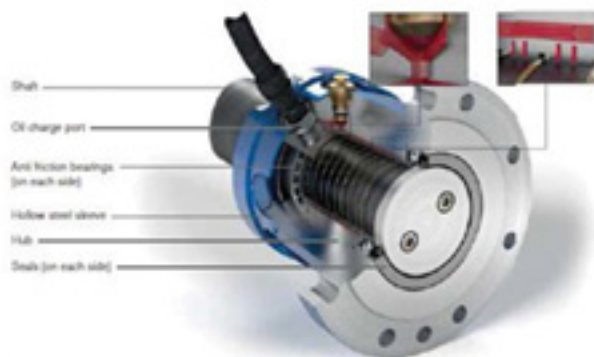
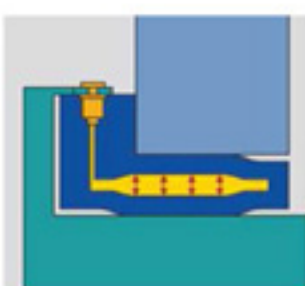
Balancing



## Voith Turbo Safeset

Torque-limiting couplings from Voith protect all components the driveline. In the event of a catastrophically high torque occurrence, the couplings interrupt the power flow in the driveline; consequential damages and production down time remains at a minimum. Special designs provide additional advantages to the process AutoSet couplings for torque limitation with slip function and automatic reset for improving the process. The releasing torque is in the range between 1,000 Nm and 20,000 kNm

## SafeSet basic principle



### Design

ST-B Series

ST-KB Series

SR-P Series

SR-N Series

SR-F Series

SR-PC Series

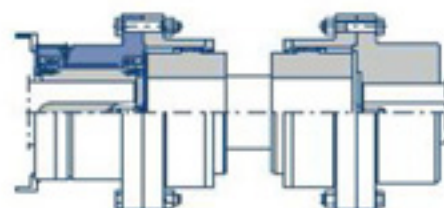
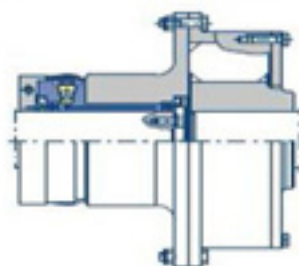


ST-B series, in combination with a flexible rubber coupling

SR-N series, with spacer and gear couplings



Service Box P115 and P240

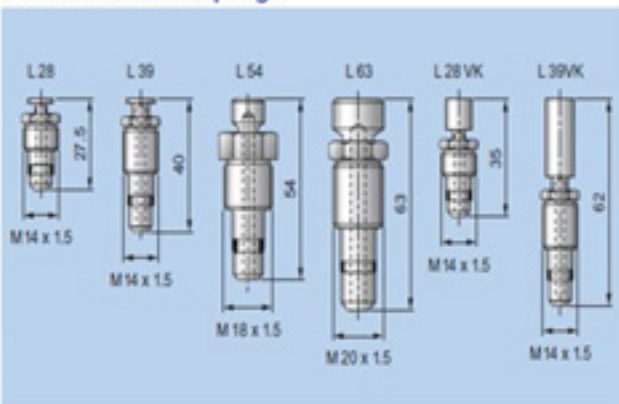


## Application



## Shear tubes

The couplings are equipped with 1-12 shear tubes of a suitable size depending in the application and the size of the coupling.



## Electro-hydraulic I/H Converters and WSR Way Valves

Actuator Technology for Positioning Cylinders on Turbomachinery



Electro-hydraulic I/H converters and WSR way valves are the ideal economic solution for controlling hydraulic positioning cylinders. This enables a valve to regulate the mass flow (e.g. steam) in a precise and highly dynamic manner. A current input signal (0/4 – 20 mA) in the I/H converters or WSR way valves is proportionally converted into an output pressure or an oil flow.

Type	Maximum input pressure [bar]	Control range for output pressure [bar]	Flow rate [l/min] at $\Delta p = 1 \text{ bar}$	
			P → A	A → T
DSG-803XXX	40	0 – 3	30	30
DSG-805XXX	40	0 – 5	30	30
DSG-805X48	20	0 – 5	100	140
DSG-807XXX	40	1 – 7	30	30
DSG-810XXX	40	0 – 10	30	30
DSG-830XXX	70	0 – 30	30	30
DSG-835XXX	70	10 – 35	30	30



Steam Turbine



Dual-channel conversion

### Applications



Power plant



Voith WSR for 3.4 MW



Voith WSR for 40MW



Multi - unit

## High-pressure Internal Gear Pumps

Internal gear pumps from Voith Turbo are working reliably in hundreds of thousands of machines worldwide. Sophisticated technology, robust design and cost-efficient operation have convinced thousands of customers to trust Voith. Based on that trust, we have become the world internal gear pumps with gap compensation.



IPV/IPVS High-pressure



IPC Medium-pressure



IPH High-pressure



IPN Low-pressure

### Applications



Die-casting machine,



Plastics injection machine



Folding press



Pressing press



Hydraulic unit

## High-Performance Universal Joint Shafts

Voith high-performance universal joint shafts offer an ideal combination of torque capacity, torsional rigidity and deflection resistance. We supply standard universal joint shafts, customerspecific adaptations as well as special designs. Technical consultation



Paper machines

Series		Torque range $M_t$ (kNm)	Flange diameter $\phi$ (mm)
S		0.25 to 275	58 to 435
M		32 to 143	225 to 350
W		55 to 1,000	225 to 550
H		260 to 10,000	350 to 1,200
P		from 1,370	from 580



Rolling mills (horizontal rolling stand)



Rolling mills (vertical rolling stand)



Voith genuine spare parts



Marine propulsion



Rail Vehicle Drive



Pumps

# TRU-TRAC ROLLERS (PTY) LTD.

## CONVEYOR BELT TRACKING TECHNOLOGY

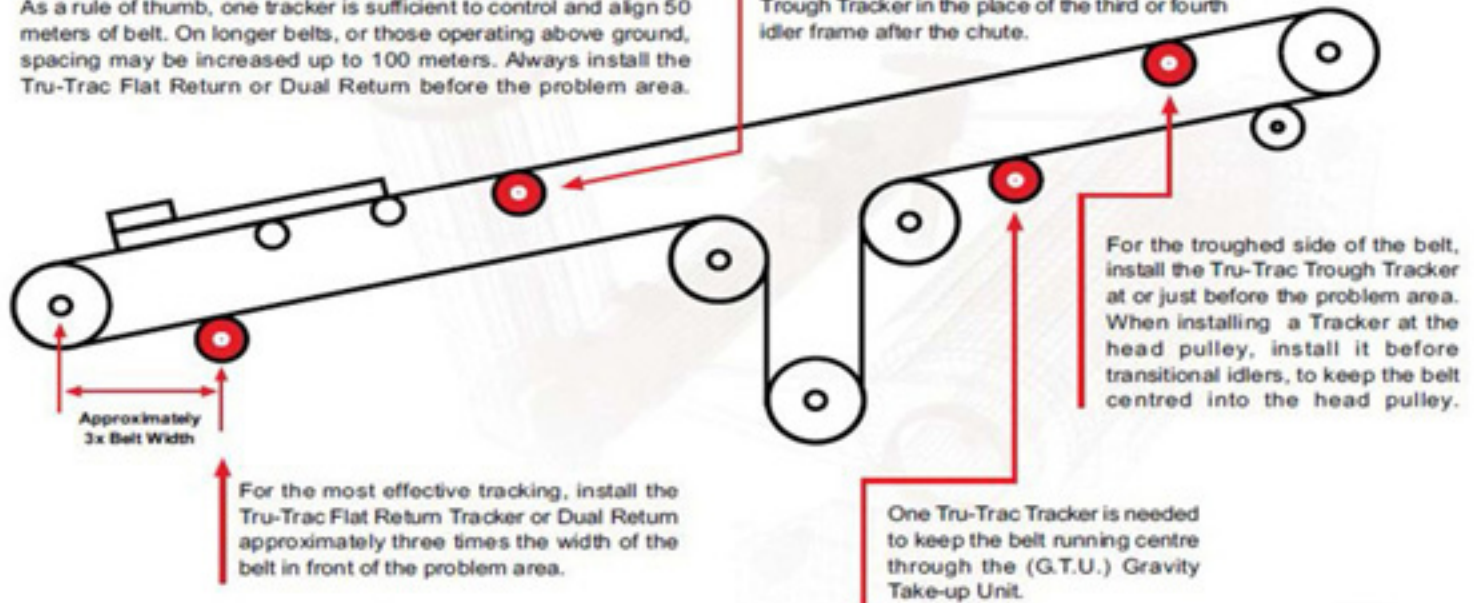


All products are manufactured to exacting specifications, using only the highest quality components and materials. The company operates from its factory and offices in Centurion, South Africa, where all products are manufactured on product specific machinery.

### GUIDELINES FOR INSTALLATION

The Tru-Trac idler need only be installed where misalignment occurs. As a rule of thumb, one tracker is sufficient to control and align 50 meters of belt. On longer belts, or those operating above ground, spacing may be increased up to 100 meters. Always install the Tru-Trac Flat Return or Dual Return before the problem area.

In event of skew loading, install the Tru-Trac Trough Tracker in the place of the third or fourth idler frame after the chute.

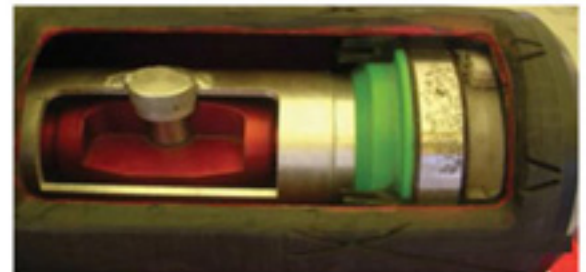


For the troughed side of the belt, install the Tru-Trac Trough Tracker at or just before the problem area. When installing a Tracker at the head pulley, install it before transitional idlers, to keep the belt centred into the head pulley.

One Tru-Trac Tracker is needed to keep the belt running centre through the (G.T.U.) Gravity Take-up Unit.



Shows the component side



Pivot point hiding inside



Flat return tracker



Dual Return Tracker



Trough Tracker



For food Grade



Flat return low speed  
Speed  $\leq 1$  m/sec



Dual return low speed



V- Return tracker



New Design of Trough tracker

# TRU-TRAC ROLLERS (PTY) LTD.

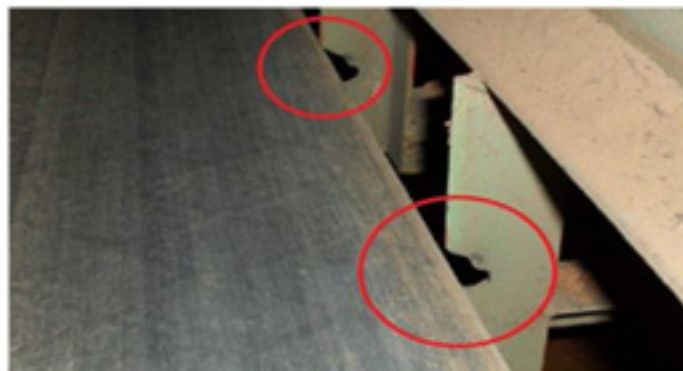
CONVEYOR BELT TRACKING TECHNOLOGY



## Applications



Misalignment at the return side



The conveyor structure cutted



Flat return



Dual Return



Trough Tracker



Flat return low speed



Before After install Tru-Trac at tail pulley

MLT has developed the SUPER-SCREW®. It is a flexible rubber splice to screw on to the belt.  
MLT specific screws are self-drilling and self-tapping (they spread the carcass threads without cutting them).  
The screwing system allows Super-Screw® to be installed regardless of the :

- Configuration of the conveyor belt,
- Access conditions,
- Weather conditions

Super-Screw®	35	63	65	80	85	100	105	125	127	180	200
Belt thickness, mm	4-11	4-13		4-15		4-15	4-13	7-20,5		7-20,5	7-19
Max. belt strength tension, N/mm	315	630		800		1 000		1 250		1 800	2 000
Mini. Pulley Ø, mm	160-200	200-300		250-350	250-400	300-350	300-400	300-500		400-800	500-1 000
Thickness top plate, mm	4	5	6	6	7	8	9	7	8	7	8,5
Thickness bottom plate, mm	3,8	4,2		5,5			6				

### Super-Screw® «ready to install»

- Product Ref :

SS 35 06 A NO T 12 1200

|
|
|
|
|
|
|
|

Super-Screw 1 2 3 4 5 6 7

- 1 - Strength
- 2 - Length of the spacers (distance tubes) in mm
- 3 - Rubber quality :
  - A for wear resistant (standard)
  - C for heat resistant 150°C (170°C flash)
  - R for heat retardant 170°C (200°C flash)
  - P for very low temperature down to -50°C
  - W for white FDA cover with stainless steel inserts and screws (maximum length 1,2 m)
  - G for oil resistant (120°C heat resistant)
  - F for fire resistant & antistatic (for Underground mining)
- 4 - NO : carbon steel inserts and galvanized screws (standard)  
 or IO : anti-magnetic stainless steel inserts and screws
- 5 - T : for Textile on the bottom for sliding belts (oil resistant + textile on the bottom)
- 6 - 12 : screw length in mm
- 7 - Belt width, mm. You need 10 % more if you install the fastener in bias 1/3 of the belt width)

### Super-Screw® : in roll



Rolls of oil resistant Super-Screw®

Super-Screw® roll is delivered in 2 coils : the top roll and the bottom roll. You need to qualify the number of screws and their quantity, same for spacers, and define the PZ bit (PZ2, Ø 5mm or PZ3, Ø 6.3mm).

Maximum length : - 25 Meters for the Super-Screw® 35 to 105  
 - 15 Meters for Super-Screw® 125 to 205

To add



Spacers



Bucket of screws



PZ Bit

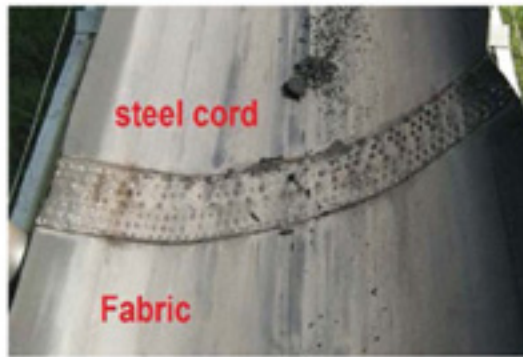


Minel Lacing Technology

# SUPER-SCREW<sup>®</sup> Lacing



Thick and thin belt joint together



Difference type of belt



New belt completed Superscrew



Chevron type conveyor



Suitable Belt cleaner



Patching



Easy to remove rubber with Skiver



Skiver Set



Screw driver

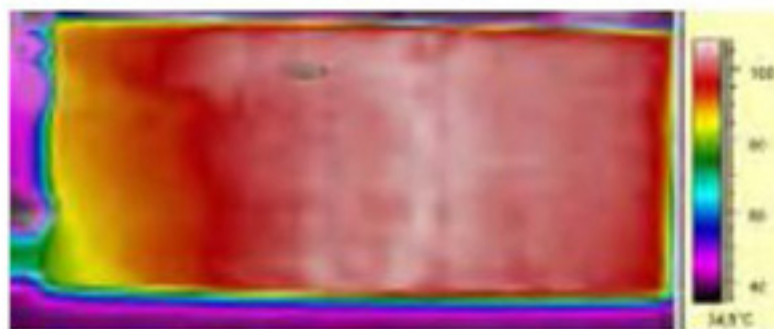
## Waterbag Vulcanizing Press



Water Press set



Easy to install



Temperature distribution test



Tools

## RINGFEDER

Keyless shaft-hub locking devices have been the cornerstone of the RINGFEDER POWER TRANSMISSION group. For over 50 years, our product offering of internal clamping and external clamping locking devices and global support has been unparalleled in the industry.

### Locking Devices



Locking Assemblies



Locking Elements



Shrink Discs



Smart - Lock - Set

### Damping Technology



Friction Springs



DEFORM plus® R



Fluid Elastomeric Damper

### Special Solutions



Shaft Couplings



Locking Assemblies



Flange Couplings

## GERWAH

Magnetic couplings made by GERWAH are absolutely wear- and abrasion-free - lengthy downtimes due to maintenance or repair are a thing of the past. The synchronous and hysteresis couplings transmit power without establishing direct contact. This qualifies them for a large number of fields of application: from use in hygienically sensible areas to overload protection in really big industrial machines, in recycling facilities or as brakes.



Magnetic Couplings



Metal Bellow Couplings



Servo - Insert Couplings



RING-flex®



Safety Couplings



Line Shafts

### ECOLOC Locking Devices/Assemblies

Ringfeder has excelled in offering premium quality locking devices to the market for almost a century. With the same outlook on quality, but at a more economical price, Ringfeder is pleased to offer the Ecoloc devices for budget conscious customers. Budget friendly internal locking devices offer a variety of solutions for the myriad of applications.

#### Locking Devices/Assemblies



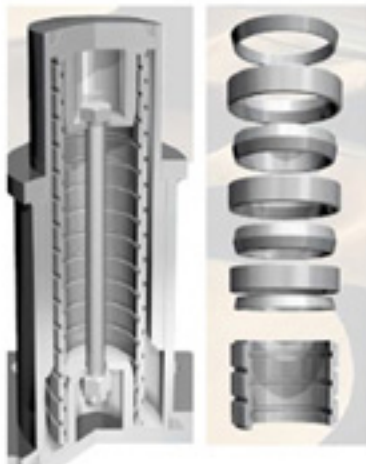
#### Applications

[Friction spring](#)

#### Couplings Backlash-free Metal Bellows Couplings



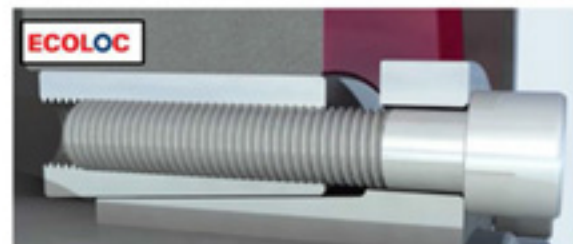
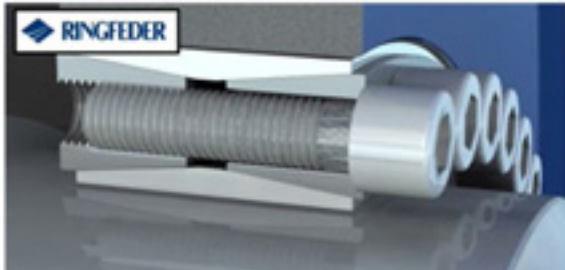
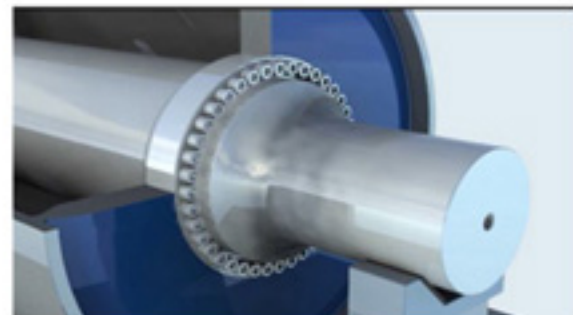
#### Locking Assemblies



Features of RING – springs®



Rail



Rolling mill



Oscillation damper



Cross section of industrial buffer



Application Hydropower Plant



Permanent Magnetic Clutch-HSV



Automatic railer Coupling

## Pressure Switches hex 27

Changeover switch with silver  
or gold contacts



**Pressure Switches hex 24**  
Normally Open or Normally  
Closed  
Maximum Voltage 42 V



**Explosion - protected Pressure  
Switches**  
To ATEX Standard



**Electronic Pressure  
Switches**



## Pressure Transmitter & Display

Output Signal :  
0.5 - 4.5 V Radiometrically  
0 - 10 V ( 3 - wire )  
4 - 20 mA ( 2 - wire )





# PRESSURE MONITORING



Ready - wired Pressure Switches hex 24 /

hex 27

Customized finishing

Pressure Switches 30

A/F

Changeover Switch



Vacuum Switches



Pressure Switches hex 24 / hex 27 with integrated

plug



## Transmission Technology

Centrifugal Clutches & Brakes

Electromagnetic Clutches & Brakes

Standard Versions

Customized Solution



Our wide range of pressure transducers and transmitters incorporate the superior Silicon-on-Sapphire sensor technology to make one of the most advanced ranges available on the market.

Pressure Transducers & Transmitter



Depth & Level



Differential



Digital USB



General Purpose



High Pressure



High Specification



High Temperature



Hygienic & Barrier Seal



Low Pressure



Oil, Gas & Subsea

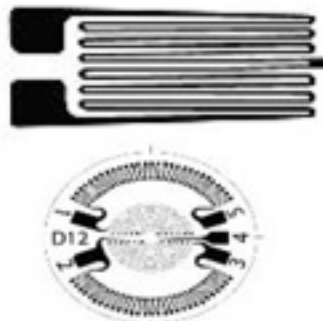


Process & Industrial



Wireless

Strain Gages and Bonding services



Applications

- Oil & Gas
- Subsea
- Aerospace
- Defence
- Automotive
- Hydraulic
- Process & Industrial
- Hygienic/ Sanitary
- OEM
- Test Calibration

# CONVEYOR BELT AND RUBBER REPAIR RESIN

# ELI-FLEX

*The quick, easy and cost-effective solution to damaged Conveyor Belting.*

Eli-Flex is a two-part polyurethane resin formulated to effect quick and easy repairs to damaged conveyor belting and other rubber components.

- Quick setting
- Easy to use twinpack mixing & application system
- Excellent flexibility
- High tear & impact-resistance
- Good wear & abrasion-resistance
- Broad spectrum chemical protection
- Flame retardant
- Low irritation potential
- No special tools or skills required
- Environmentally friendly handling properties

Available in pourable liquid and paste versions.



Eli-Flex has a unique and innovative packaging method. This elastomer resin system is packed in one easy-to-use twinpack. No mixing or application tools, no special equipment, no wastage, no mess, no training required.

Step 1



Remove the kit from the silver foil by cutting where indicated. Open the kit by peeling out the black divider seal from the white spine.

Step 2



Mix the resin and hardener by working the bag in your hands for 2-3 minutes. When the Eli-Flex feels warm it is ready to apply.

Step 3



Cut a hole in the bag and apply to damaged belt that has been cleaned and roughened. The user has 15-20 minutes working time (temperature dependant).

Step 4



Spread evenly over the damaged area using a straight edged tool. Wait 50-60 minutes before running the belt. Ancillary Eli-Flex applications: Industrial tyre repair, rubber screen repair, patching worn lagging.

Step 5

## Applications



Repair surface of the rubber belt

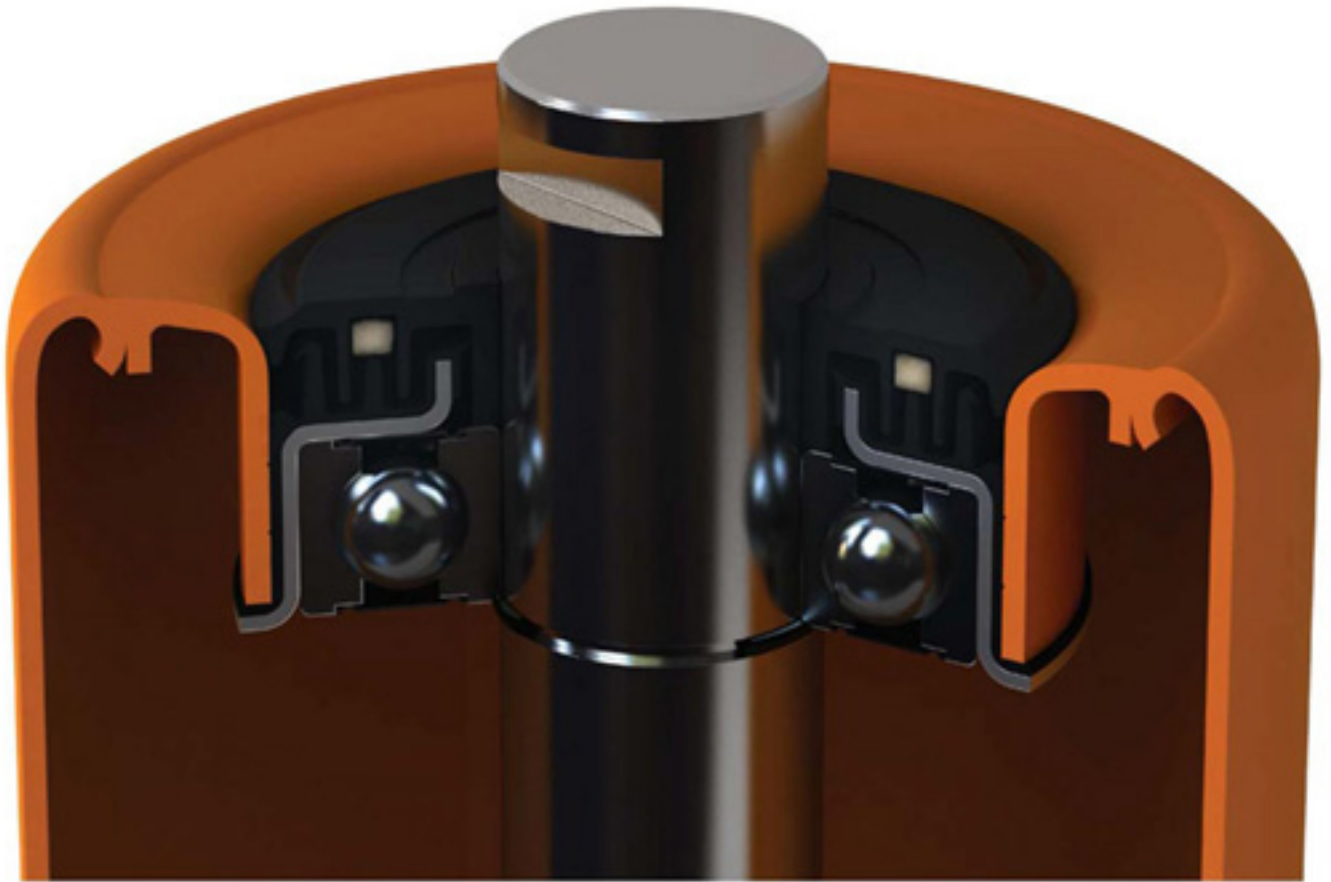


Repair for rip of truck tire





**ROLLENT**  
Daeyang Rollent Co., Ltd.



### 3A Unique Carrier Roller Belt Damage Prevention + Triple Housing

- 1 Prevention of damage to belt by round-shaped edge
- 2 Reinforcement and better roundness through molding technology (TIR 0.5mm)
- 3 Maximizing lifespan of bearing through triple housing structure
- 4 Accommodation of misalignment through middle rubber housing
- 5 Shock absorption with buffering effect of middle housing
- 6 Triple sealing system with labyrinth, felt and lip sealing
- 7 Perfect waterproof & dust-proof at IP55 grade





**ROLLENT**  
Daeyang Rolient Co., Ltd.



### UNIUPASS Roller

- Engineering plastic bearing housing applied
- The lowest friction value to save power
- Plastic shaft cap applicable for minimizing noise
- Light weight (10~15%)



### Plastic Roller

- HDPE(High Density Polyethylene) Roller
- Superior Corrosion resistance and abrasivity
- Plastic shaft cap applicable for minimizing noise
- Light weight (15~20%)



### Impact Roller

- Eco-friendly product capable of replacing rubber wheel
- Maximized shock absorbing feature
- FRAS rubber wheel applicable (UL94 V2~V0)



### Rubber disc return Roller

- Eco-friendly product capable of replacing rubber disc
- Prevents disengagement of rubber disc by wide insert
- FRAS rubber wheel applicable (UL94 V2~V0)



### Pulley

- Drive Pulley & Non-Drive Pulley
- Rubber lagging, Ceramic lagging, Hard facing
- Key type, Power lock type, Taper lock type



**SKF**  
**COUPLING**



**tego**  
**LINING**



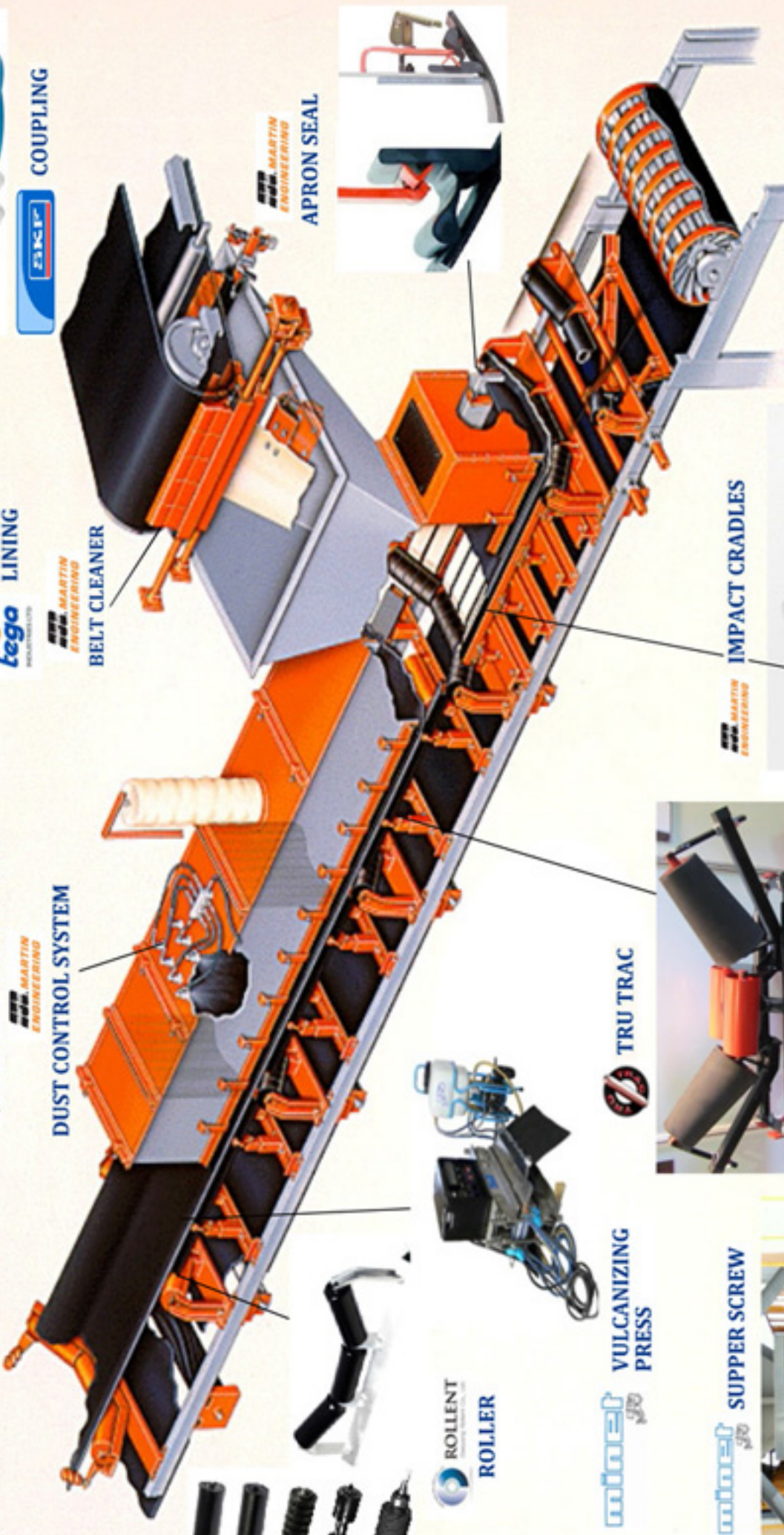
**RINGFEDER**  
**POWER LOCK**



**RINGFEDER**  
**DUST CONTROL SYSTEM**



**VOITH**  
**FLUID COUPLING**



**MARTIN ENGINEERING**  
**APRON SEAL**



**MARTIN ENGINEERING**  
**IMPACT CRADLES**



**TRU TRAC**



**ROLLENT**  
**ROLLER**



**minet**  
**VULCANIZING PRESS**



**minet**  
**SUPPER SCREW**

